

# NDX™ TURF TIRE & WHEEL SYSTEM



## The Tire That Never Goes Flat

OTR Wheel Engineering's game-changing, patent-pending NDX™ tire & wheel system features OEM-approved treads, in popular sizes, designed for turf equipment. Sold as an assembly—tire and wheel included—it's a bolt-on replacement for stock tires and wheels that's easy to install.

**100% Uptime + 0% Downtime = Maximum Productivity, Utilization, Safety & Value!**



OTR'S innovative, patent-pending NDX tire lasts up to 2x longer than airless options, even when carrying extreme loads with a 1" hole in its sidewall.

### MORE VALUE

- ✔ No downtime from flats = lower life cycle costs & better ROI
- ✔ Heavy-duty construction; long-lasting & ultra-durable
- ✔ Exceptional traction, grip & handling
- ✔ Less deflection—maintains safe ground clearance
- ✔ Wide contact patch enhances traction, stability & braking performance
- ✔ Comfortable ride, comparable or better than pneumatics
- ✔ No maintenance required, tire retains optimal profile at all times

**1** flat tire every other week = **26** flat tires annually



**1** flat tire = **2 HOURS** of lost productivity

**2** hours of downtime = **52** hours of lost productivity annually

**\$300** = **\$7,800**  
cost per incident (lost productivity + labor) in opportunity costs

The average fleet has **4** vehicles = **\$31,200** lost annually

# GRASS MASTER NDX™

## TIRE INFORMATION

TIRE	
Description:	Grass Master, NDX
Size:	24x12.00-14
Tread Pattern:	Grass Master NDX, Turf
Application:	Turf Equipment, All-Purpose
Ply Rating:	14 PR Effective
Load Index:	70
Speed Symbol:	A6

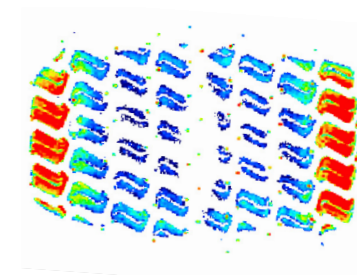
DIMENSIONS	
Diameter, Mounted:	23.0" (584.2 mm)
Width, Mounted:	12.0" (304.8 mm)
Rim Diameter:	14.0" (355.6 mm)
Rim Width:	10.5" (266.7 mm)
Tire Weight:	43.1 lbs. (19.6 kg)
Tread Depth:	0.35" (9 mm)

INFLATION & LOAD DATA	
Rated Pressure:	0 psi (0 kPa)
Maximum Load:	740 lbs. (336 kg)
Maximum Speed:	20 mph (32 km/h)

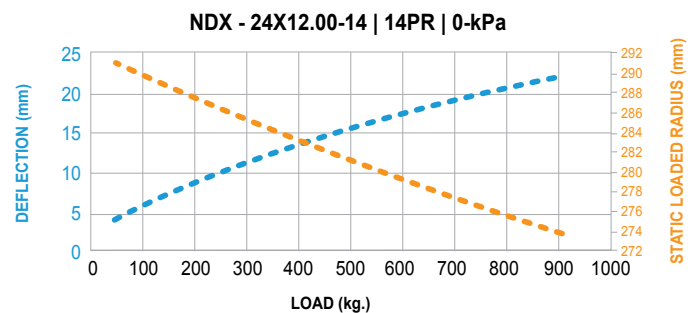
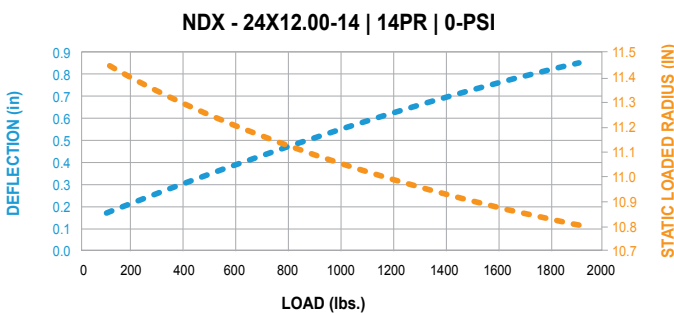
PERFORMANCE (@ RATED PRESSURE, LOAD & SPEED)	
Rolling Circumference:	69.18" (1,757 mm)
Static Load Radius:	10.72" (272 mm)
Revolutions:	916/mi (569/km)
Deflection:	0.78" (19.7 mm)



NDX tires reduce fuel consumption by up to 10% compared to other tire options, making it an environmentally friendly solution as well.



Wide contact patch coupled with unique design means an NDX tire maintains an optimal profile, even under heavy loads (as confirmed by deflection measurements).



✓ **Heavy-duty construction** extends operating life, lasting up to 2x longer than other airless options.

✓ **Unique design** maintains same profile as pneumatic tire with NO air required, ensuring safe ground clearance at all times.

✓ **Patent-pending airless technology** means NDX is NOT a limiting factor in vehicle/machine function and performance—it's capable of carrying heavy loads.

✓ **Superior ride comfort**, absorbing bumps and vibration as well if not better than pneumatic tires.